

The College of Nanoscale Science and Engineering of the University at Albany is the first college in the world dedicated to education, research, development, and deployment in the emerging disciplines of nanoscience, nanoengineering, nanobioscience, and nanoeconomics.

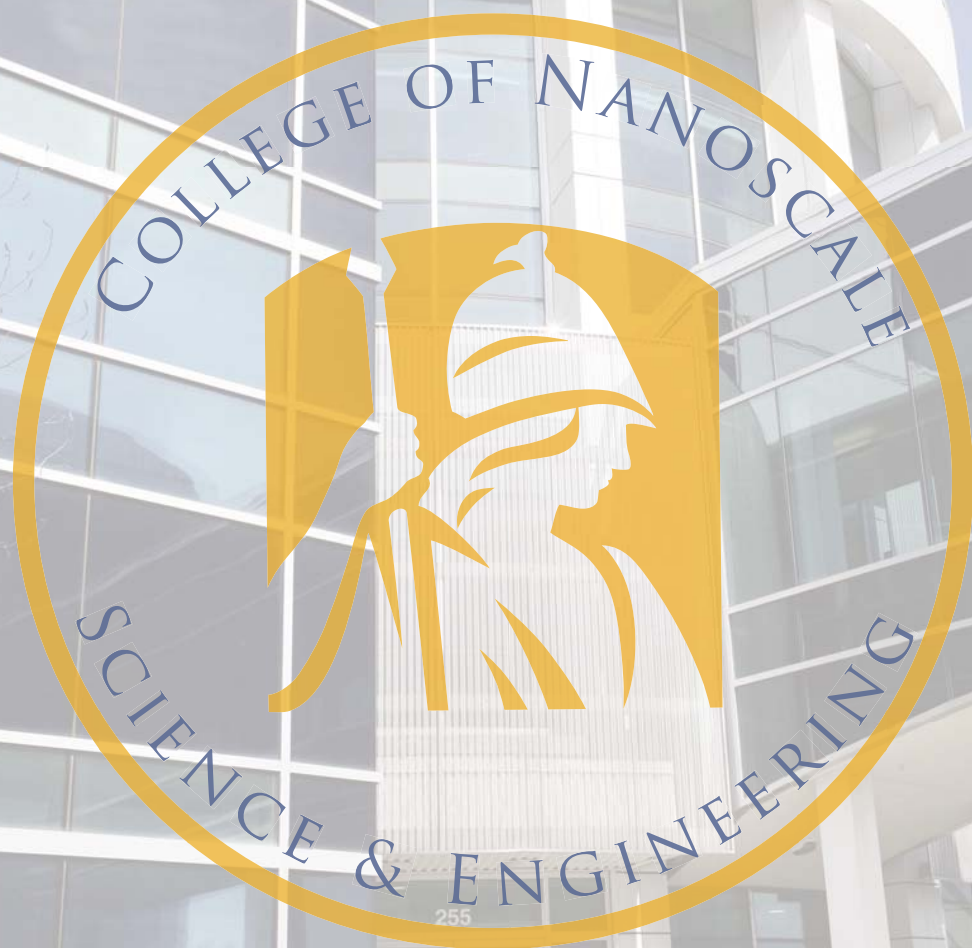
CNSE is recognized as the world's leading college for nanotechnology. CNSE's Albany NanoTech Complex is the most advanced research facility of its kind at any university in the world: a \$4.5 billion, 800,000-square-foot megaplex that offers students a one-of-a-kind academic experience.



[cnse.albany.edu](http://cnse.albany.edu)

# COMMENCEMENT RECEPTION

MAY 16, 2009



The faculty, staff and administration of CNSE congratulate the graduates on their distinguished achievements and wish them the best in their future endeavors.



### HASTI AMIRI, M.S.

**Advisor:** Dr. Michael Carpenter  
**Constellation:** Nanoscience  
**Degree:** M.S. Nanoscale Engineering  
**Thesis:** *Distance Dependence of the Phenyl Group from CdSe Quantum Dot Surface for Optical Detection of Aromatic Hydrocarbons*  
**Native Country:** Iran



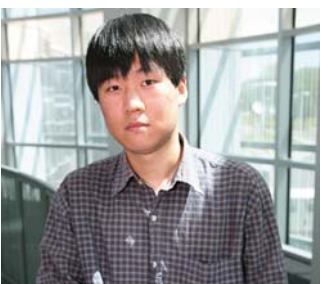
### BHARAT AVASARALA, M.S., M.B.A.

**Advisor:** Dr. Pradeep Haldar  
**Constellation:** Nanoengineering  
**Degree:** M.S. Nanoscale Engineering, Master of Business Administration  
**Thesis:** *Effect of Surface Roughness of Composite Bipolar Plates on the Contact Resistance of a Proton Exchange Membrane Fuel Cell*  
**Native Country:** India  
Currently enrolled in the CNSE Ph.D. Program



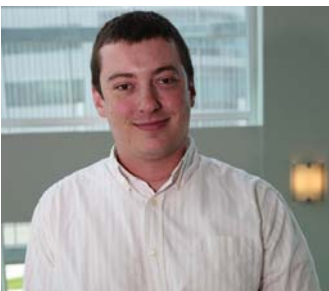
### ANDREW BOROCAN, M.S.

**Advisor:** Dr. James Castracane  
**Constellation:** Nanobioscience  
**Degree:** M.S. Nanoscale Science  
**Thesis:** *NANIVID: A New Technology for Cancer Studies*  
**Native Country:** USA



### CHAE HWI CHONG, M.S.

**Advisor:** Dr. Robert E. Geer  
**Constellation:** Nanoscience  
**Degree:** M.S. Nanoscale Science & Engineering  
**Thesis:** *Conductive Atomic Force Microscopy for On-Chip Interconnects*  
**Native Country:** USA



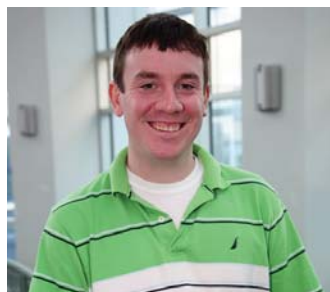
### BRIAN COHEN, M.S.

**Advisors:** Dr. Alain E. Kaloyeros, Dr. Anand Gadre  
**Constellation:** Nanobioscience  
**Degree:** M.S. Nanoscale Science  
**Thesis:** *Development of a Conducting Polymer Micro-Immunosensor for Bio-Detection*  
**Native Country:** USA  
Currently enrolled in the CNSE Ph.D. Program



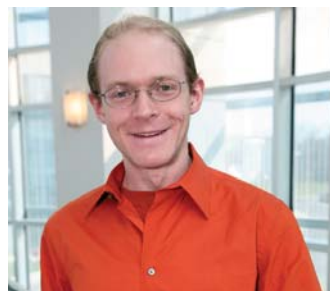
### FERNANDO GOMEZ-BAQUERO, M.S.

**Advisor:** Dr. Edward Cupoli  
**Constellation:** Nanoeconomics  
**Degree:** M.S. Nanoscale Engineering  
**Thesis:** *Assessment of the Commercial Viability of Carbon Nanotubes for Energy Applications*  
**Native Country:** Columbia  
Currently enrolled in the CNSE Ph.D. Program



### MICHAEL PADGEN, M.S.

**Advisor:** Dr. James Castracane  
**Constellation:** Nanobioscience  
**Degree:** M.S. Nanoscale Engineering  
**Thesis:** *MEMS Technologies for Personal Hydration Monitoring and High Throughput Immunological Nanopore Assays*  
**Native Country:** USA  
Currently enrolled in the CNSE Ph.D. Program



### ZACHARY RICE, M.S.

**Advisor:** Dr. Nathaniel Cady  
**Constellation:** Nanobioscience  
**Degree:** M.S. Nanoscale Engineering  
**Thesis:** *Development of a Relative Humidity Sensor for PEM-Based, Fuel Cell Systems*  
**Native Country:** USA  
Currently enrolled in the CNSE Ph.D. Program



### KEVIN RYAN, M.S.

**Advisor:** Dr. Wei Wang  
**Constellation:** Nanoengineering  
**Degree:** M.S. Nanoscale Engineering  
**Thesis:** *Novel Designs for Integrating Memristors with CMOS Technology to Fabricate Neuromorphic Architectures*  
**Native Country:** USA  
Currently enrolled in the CNSE Ph.D. Program